

Z60 EXP
Diagnostic Ultrasound System



The Z60 EXP EXP EXP is a wise choice for those who require high-quality image performance, ease of mobility, as well as affordability when it comes to advanced ultrasound imaging. With comprehensive configurations and an integrated design, the Z60 EXP is the result of Mindray's continuous and determined efforts towards making primary healthcare more efficient, effective and accessible for all.

Comprehensive configurations for easy and accurate diagnosis

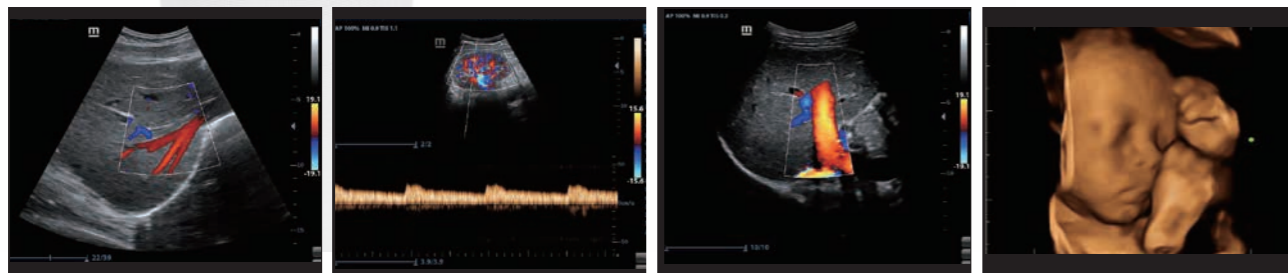
With an abundant transducer family, new platform embedded advanced technologies and Mindray's inherent smart solution design, the Z60 EXP will help you complete your daily exams precisely and effectively.

Wide-range applications

- **Scanning modes:** B, Color, PW, Power, M, Free Xros M
- **Transducer variety:** Convex, Linear, Phased array, Endocavity, 4D Volume
- **Applications:** ABD/OB/GYN/SML/URO/VAS/CAR/ORTH/MSK/NERVE and more

Advanced imaging technologies

- **iBeam™:** Spatial Compounding Imaging
- **iClear™:** Speckle Suppression Imaging
- **Phase Shift THI:** Purified harmonic imaging



Color Flow of Liver

PW of Renal Artery

Color Flow of Portal Vein

3D of Fetal Face

Smart functions

- **3D/4D imaging**
- **Smart Face:** Intelligently remove occlusions and eliminate noise for fetal face
- **Smart OB:** Accurate auto measurements for fetal parameters
- **iLive:** Realistic view of the fetus with human skin-like images
- **iNeedle™:** Clear visualization of actual needle tip and shaft
- **Auto IMT package:** Automatic measurement for Intima-Media Thickness

Integrated and reliable design for multiple clinical scenarios

The Integrated design with internal adapter and battery means that the Z60 EXP is highly mobile and accessible anytime and anywhere. Combined with 3 transducer connectors, the Z60 EXP will soundly meet all your clinical requirements.

15 inch Full Screen design



60 degree tilting angle adjustable monitor



Max 3 universal transducer connectors

500GB hard disk for large patient data storage

1.5h scanning with rechargeable battery

